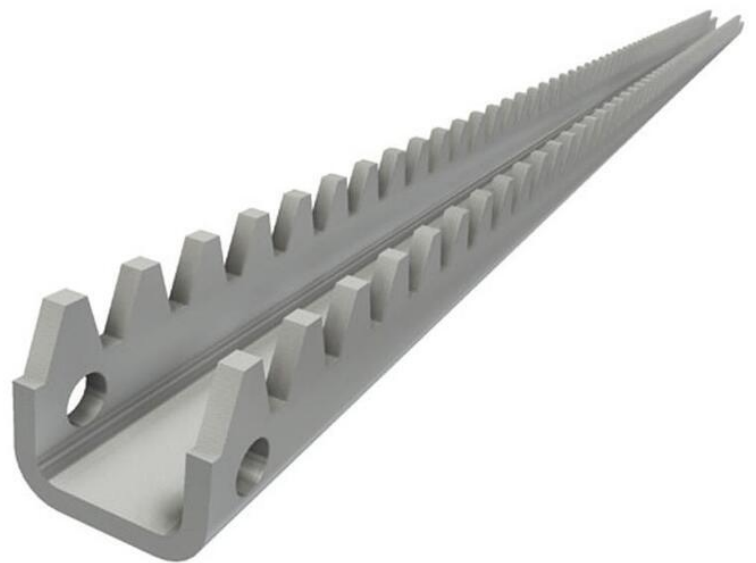


# Sheet steel racks PH22-3 / Straight



Straight, zinc-plated sheet steel rack for pinion housing unit TU6-22/TU11-22. Sheet steel racks are supplied as standard with run-out protection (UV=77). Sheet steel racks are also available without run-out protection (UV=0). Underneath on the back of the sheet steel rack there is a square hole. This is for mounting a coach bolt for extra run-out protection (to be used with versions with UV=77). The sheet steel rack can be attached to an air vent or ventilation flap with a window bracket set. Other lengths (L) and specifications on request.



# Sheet steel racks PH22-3 / Straight



Item no.	Description	[m] kg	[L] mm	UV mm
417567	RACK 22-3\L390\D6\UV77	0,44	390	77
417569	RACK 22-3\L490\D6\UV77	0,55	490	77
417571	RACK 22-3\L591\D6.5\UV77	0,66	591	77
417573	RACK 22-3\L691\D6\UV77	0,78	691	77
418080	RACK 22-3\L792\D6.5\UV77	0,89	792	77
418082	RACK 22-3\L892\D6.5\UV77	1,01	892	77
418085	RACK 22-3\L1043\D6.5\UV77	1,18	1043	77
418089	RACK 22-3\L1244\D6.5\UV77	1,41	1244	77