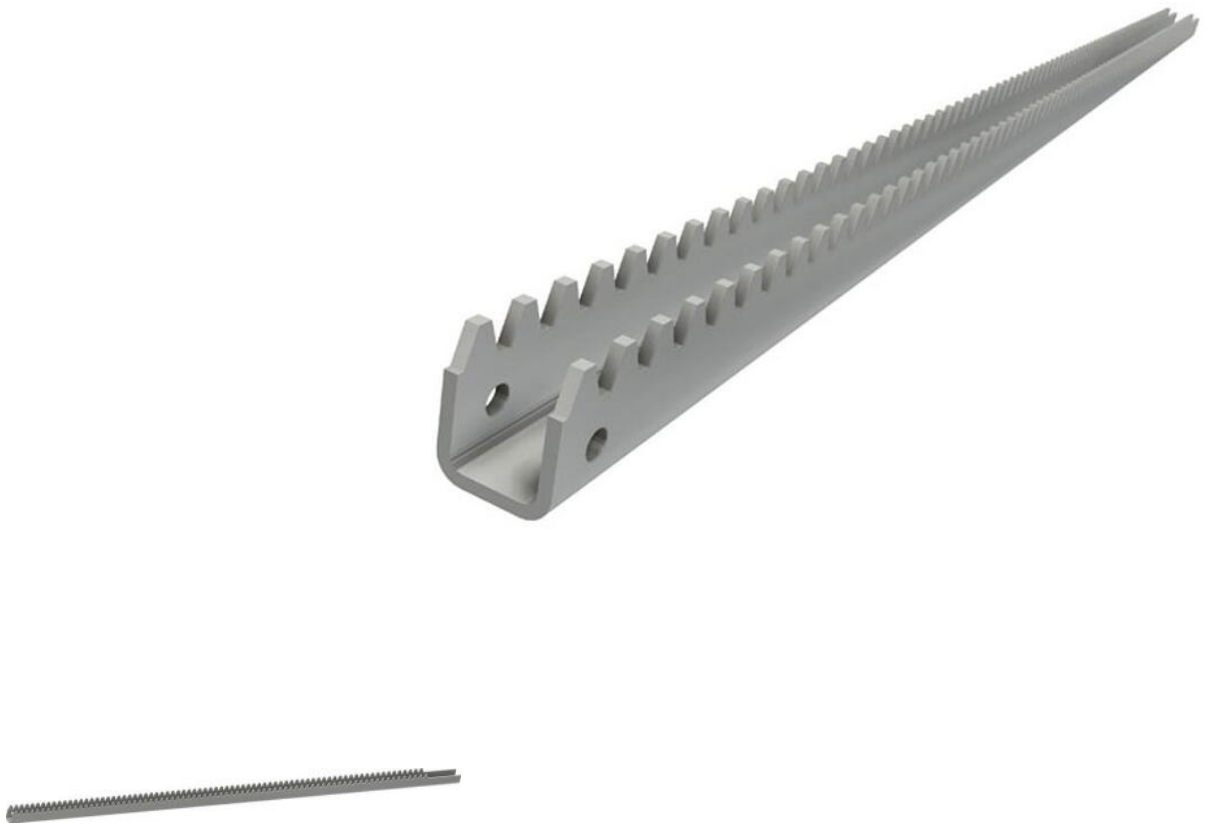


Sheet steel racks PH30-3 / Straight



Straight zinc-plated sheet steel rack for TU6-30/TU11-30 rack drive. Sheet steel racks are supplied as standard with run-out protection (UV=77). Sheet steel racks are also available without run-out protection (UV=0). Underneath on the back of the sheet steel rack there is a square hole. This is for mounting a coach bolt for extra run-out protection (to be used with versions with UV=77). The sheet steel rack can be attached to an air vent or ventilation flap with a window bracket set. Other lengths (L) and specifications on request.



Sheet steel racks PH30-3 / Straight



Item no.	Description	[m] kg	[L] mm	UV mm
413970	RACK 30-3\L1043\D6.5\UV77	1,56	1043	77
413971	RACK 30-3\L1244\D6.5\UV77	1,86	1244	77
418555	RACK 30-3\L1345\D6.5\UV77	2,01	1345	77
413972	RACK 30-3\L1445\D6.5\UV77	2,17	1445	77
418558	RACK 30-3\L1546\D6.5\UV77	2,32	1546	77
413973	RACK 30-3\L1646\D6.5\UV77	2,47	1646	77
413979	RACK 30-3\L1747\D6.5\UV77	2,62	1747	77
413978	RACK 30-3\L1847\D6.5\UV77	2,77	1847	77
413976	RACK 30-3\L1948\D6.5\UV77	2,92	1948	77