

# W240 Worm gearboxes



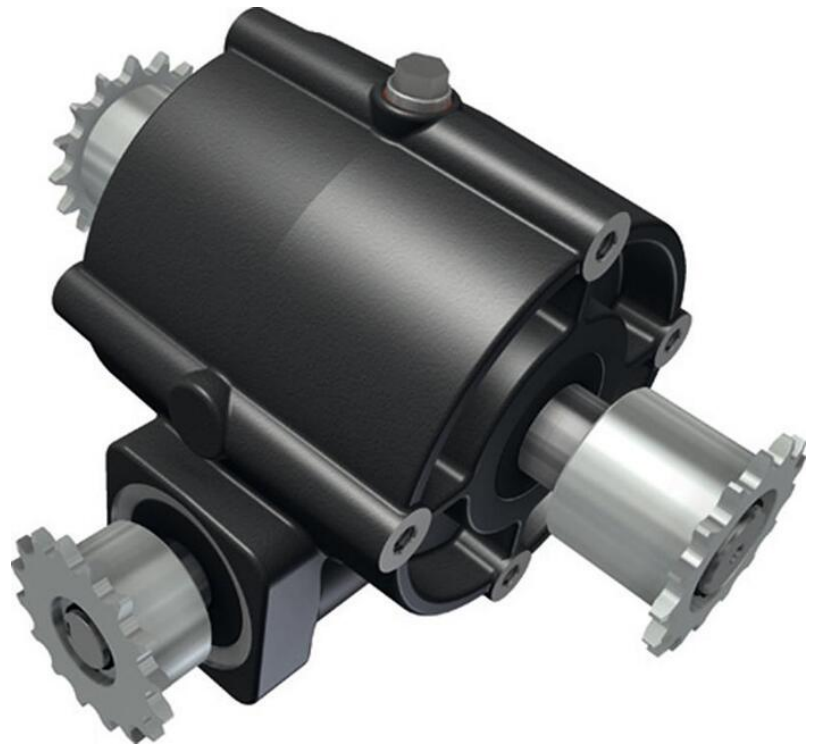
The W240 worm gearboxes are maintenance-free, compact drive units for ventilation and hoisting systems in greenhouses and livestock houses. W240 worm gearboxes are mainly used in indirectly-driven systems, where several W240 worm gearboxes are driven by one motor gearbox. A mobile drive can also be supplied.

W240 worm gearboxes feature a self-braking worm gear transmission ( $i=35$ ). This low-noise transmission ensures that the output shaft is blocked when the drive unit is halted. W240 worm gearboxes are available in a standard version and in a version with continuous worm shaft (W240D). W240 worm gearboxes feature 16-tooth sprocket wheels (12"x5/16") on the input and output shafts and can be fitted on mounting plates on both sides of the worm gearbox.

W240 worm gearboxes are finished in graphite-grey powder coating, and are supplied complete with fixing bolts and spring washers.

## W240 Worm gearboxes:

- Drive torque up to 240 Nm;
- Suitable for intermittent operation, operating class s3-35%, duty cycle maximum 25 minutes;
- Ambient temperatures between 0 and 40°C;
- Other specifications and colours available on request.



# W240 Worm gearboxes



Item no.	Description	[m] kg	[M]2 Nm	[M]1 Nm	i
504000	W240-240\35\A28	13,5	240	19,6	35
504010	W240D-240\35\A28	14,5	240	19,6	35